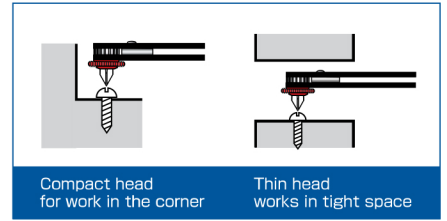


DR-55

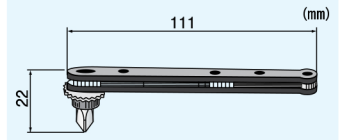
RoHS MINI OFFSET RATCHET

Only 22mm-high low-profile head accessible to tight space!!

- Built-in quick ratchet device increases work productivity.
- Bit set includes : ⊕#1, #2, #3 & ⊖6mm



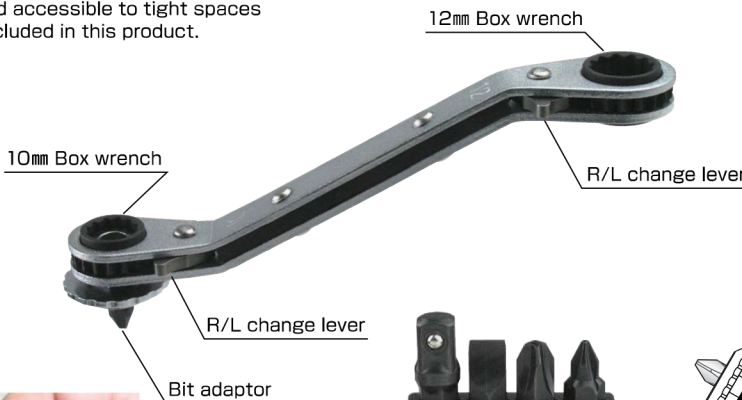
Super-thin Head 22mm



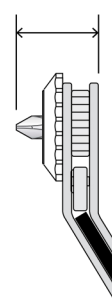
DR-56

RoHS 7-in-1 ANGLED RATCHET

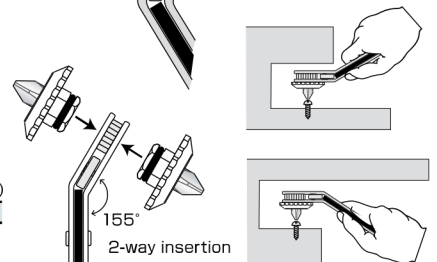
- Ratchet handle with angled heads for ease of operation (Max. torque: 27.4 Nm)
- Use as a screwdriver (adaptor included) with a selection of 5 low-profile bits in a bullet holder.
- Bit adaptor accepts standard 6.35mm (1/4") hex bits.
- Low-profile head accessible to tight spaces
- ※ No socket is included in this product.



Slim Head 24.5mm

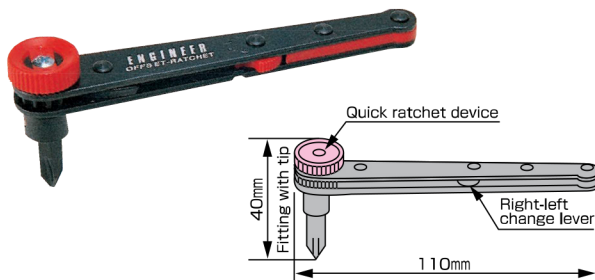


Item No.	Bit Sizes	Length	Wgt.(g)
DR-56	⊕#1, #2, #3, ⊖6 1/4" socket adaptor	135	78



DR-05 RoHS OFFSET RATCHET DRIVER

- Built-in quick ratchet mechanism increases work productivity.
- Designed to permit work in close areas that are inaccessible with ordinary drivers.
- Tip : ⊕#2/⊖6mm



DR-06 RoHS OFFSET RATCHET DRIVER WITH BIT SET

Excellent for working in close areas!

- Versatile driver with most popular ⊕/⊖ & hex bits.
- Complete with handy bullet holder for carrying.
- Replacement set includes: ⊕#00, #1, #2, ⊖4.5, 6
 - 1.5, 2, 2.5, 3, 4
- Built-in quick ratchet device.

